



**PYRENEES®**

**CONSTRAINED CERVICAL PLATE SYSTEM**



# PYRENEES®

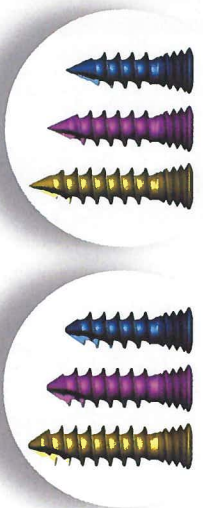
## CONSTRAINED CERVICAL PLATE SYSTEM

The PYRENEES® Constrained Cervical Plate System offers a low-profile design. Featuring the revolutionary *tifix*® Locking Technology, the system does not require an additional locking mechanism, as each screw head forms an autogenic lock to the plate upon insertion.



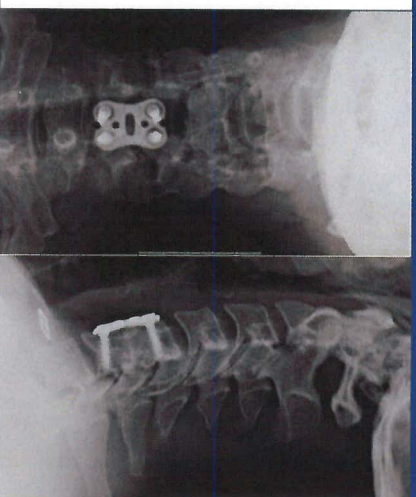
### PLATE DESIGN

- 1 – 5 level plates
- 1.7 mm leading edge
- 2.5 mm maximum profile\*
- \*Maximum profile varies by plate level



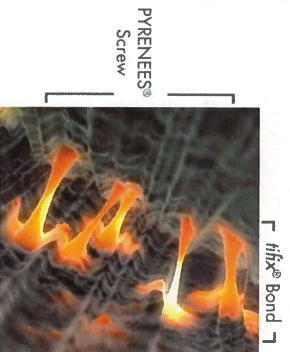
### SCREW DESIGN

- Ø4.0, 4.35, & 4.5 mm screws
- Flexibility to insert screws up to 15° in any direction
- 12 – 16 mm lengths (additional lengths available by request)



PYRENEES® Constrained A/P & Lateral  
Fluoroscopic Images

- Revolutionary *tifix*® Locking Technology
- Flexibility to Insert Screws Conically Up to 30°
- Screws Lock to the Plate Upon Insertion
- No Additional Locking Mechanism



### *tifix*® LOCKING TECHNOLOGY

- Difference in material hardness promotes formation of an autogenic lock between each screw & the plate
- No additional locking mechanism
- Allows for repeated screw adjustment up to three times without compromising the locking feature



K2M, Inc. 751 Miller Drive SE • Leesburg, Virginia 20175 USA • 1.866.526.4171 • 1.571.919.2000 • FX 1.866.862.4144  
Emergo Europe Molenstraat 15 • 2513 BH, The Hague • The Netherlands • +31.70.345.8370 • FX +31.70.346.7299  
©2015 K2M, Inc. All rights reserved. K202700001 Rev. 5 Actual device color may vary. Consult product catalog for details.  
Licensed from Prof. Dr. D. Wolter U.S. Patent 6,922,562. For Patient Information please see [www.K2M.com/about-us/patients](http://www.K2M.com/about-us/patients)

[www.K2M.com](http://www.K2M.com)



0068

