



# everest

## Product Bulletin # 6

**Release Date:** July 2012

**To:** K2M Sales Team

**From:** K2M Marketing Team

**Subject:** EVEREST® Rod to Rod Connectors

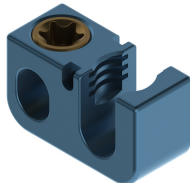
### EVEREST® 5.5 mm/6.0 mm Rod to Rod Connectors are now available!

- Available in the following designs:
  - Closed/Closed
  - Closed/Open
  - Axial
  - Closed/Closed (Narrow)
- Accommodate both 5.5 mm & 6.0 mm diameter rods
- Utilize the EVEREST Set Screw (T30 hexalobe) & all EVEREST instrumentation

Closed/Closed



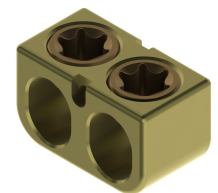
Closed/Open



Axial



Closed/Closed



Please contact Sales Support at [customercare-email@K2M.com](mailto:customercare-email@K2M.com) to place an order.

If you have any questions, please contact Alyssa Santoro, Associate Product Manager,  
at 703-777-3155 Ext. 343 or [asantoro@K2M.com](mailto:asantoro@K2M.com)