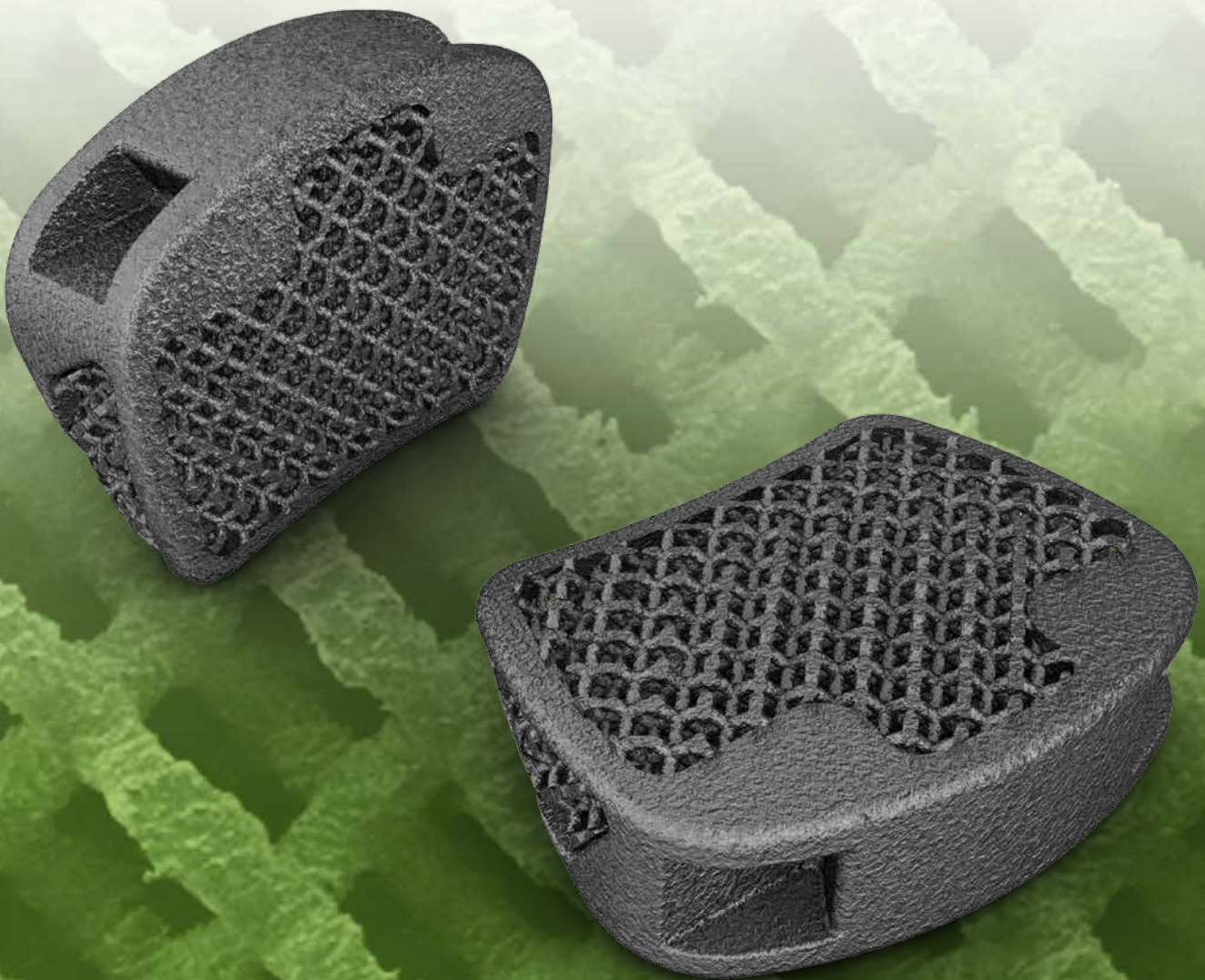




EIT

Emerging
Implant
Technologies



EIT Cervical System

For Natural Bone Ingrowth with EIT Cellular Titanium®

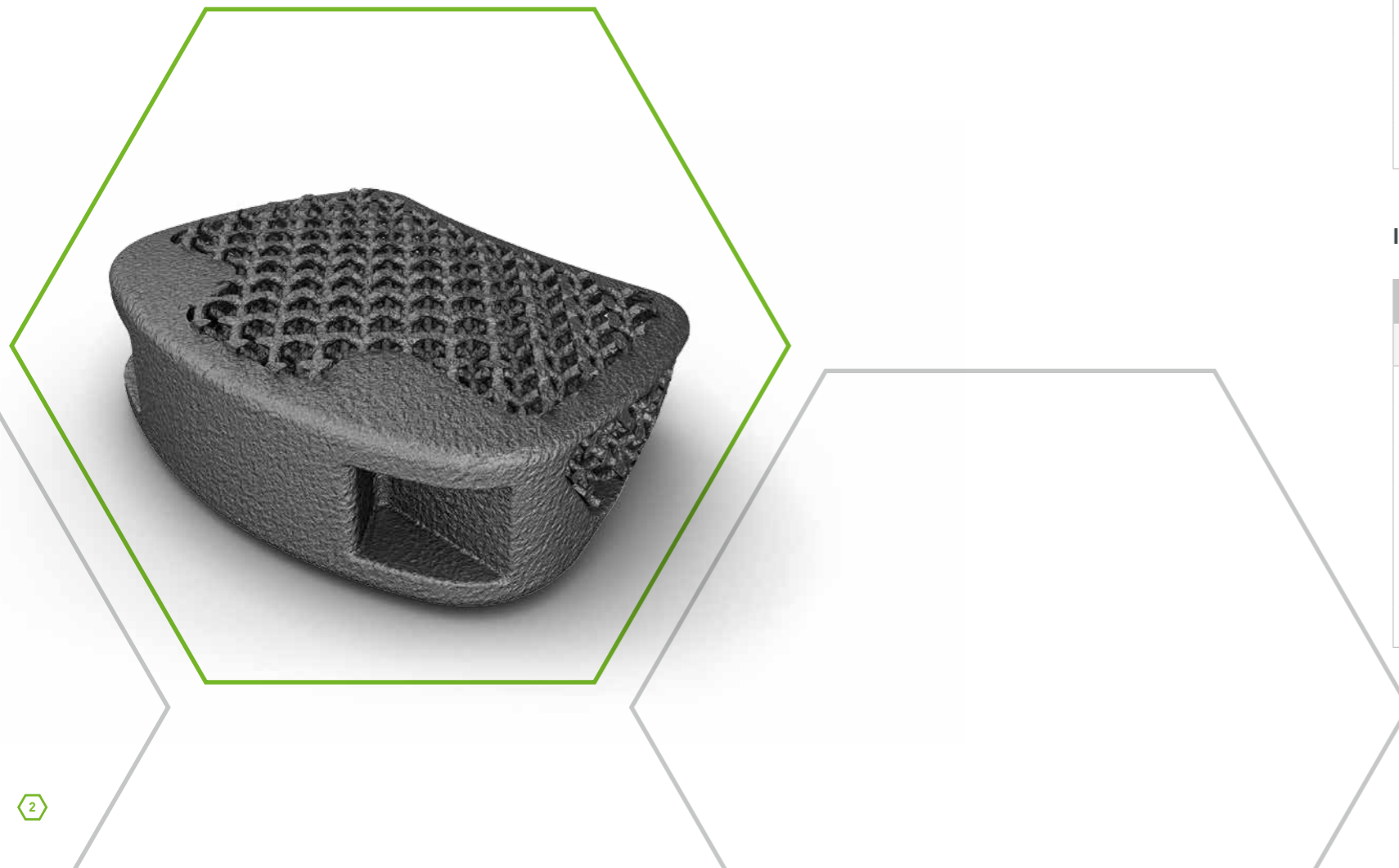
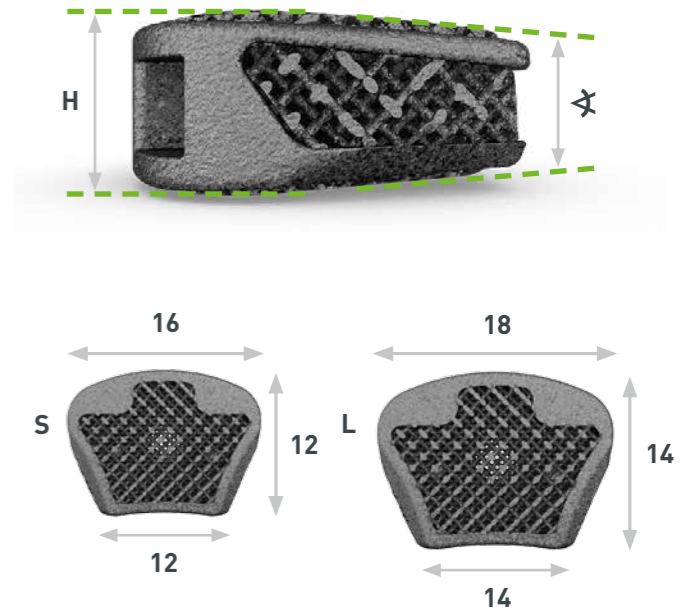
EIT Cervical Implant

Implants & Instruments

- **EIT Cellular Titanium® provides active fusion area**
 - » ~80% porosity
 - » ~650 µm diamond pore size
 - » open interconnected framework for optimal cell migration and proliferation
 - » Bone grafting is not necessary
- **Dome shaped to fit endplate anatomy**
- **Suitable elasticity modulus avoids stress shielding and bone resorption**
- **Rough elevated surface provides high primary stability**
- **2 footprint sizes for maximized endplate contact**
 - » Small (S) = 12x16 mm
 - » Large (L) = 14x18 mm
- **7 heights in 1mm increments**
 - » 4-10 mm
- **4° and 8° lordosis angle for spinal alignment and sagittal balance**
- **Lateral wedge design for maximal contact of the uncovertebral joint**
- **X-ray markers support ideal intraoperative implant positioning and postoperative follow-up**

Implants

EIT Cervical Cage			
∠	H	S	L
4°	4 mm	CEI4040S	CEI4040L
	5 mm	CEI4050S	CEI4050L
	6 mm	CEI4060S	CEI4060L
	7 mm	CEI4070S	CEI4070L
	8 mm	CEI4080S	CEI4080L
	9 mm	CEI4090S	CEI4090L
	10 mm	CEI4100S	CEI4100L
8°	4 mm	CEI8040S	CEI8040L
	5 mm	CEI8050S	CEI8050L
	6 mm	CEI8060S	CEI8060L
	7 mm	CEI8070S	CEI8070L
	8 mm	CEI8080S	CEI8080L
	9 mm	CEI8090S	CEI8090L
	10 mm	CEI8100S	CEI8100L



Instruments



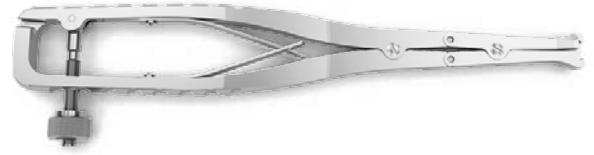
EIT Cervical Trials			
∠	H	S	L
4°	4 mm	CET2040S	CET2040L
	5 mm	CET2050S	CET2050L
	6 mm	CET2060S	CET2060L
	7 mm	CET2070S	CET2070L
	8 mm	CET2080S	CET2080L
	9 mm	CET2090S	CET2090L
	10 mm	CET2000S	CET2000L

EIT Cervical Trials			
	H	S	L
8°	4 mm	CET2840S	CET2840L
	5 mm	CET2850S	CET2850L
	6 mm	CET2860S	CET2860L
	7 mm	CET2870S	CET2870L
	8 mm	CET2880S	CET2880L
	9 mm	CET2890S	CET2890L
	10 mm	CET2800S	CET2800L

Instruments

Inserter

CET30101



Slender Inserter

CET30131



Part A InserterTube



Part B Gripper



Part C Stopper



Part D Tail wheel



Part E Tube wheel



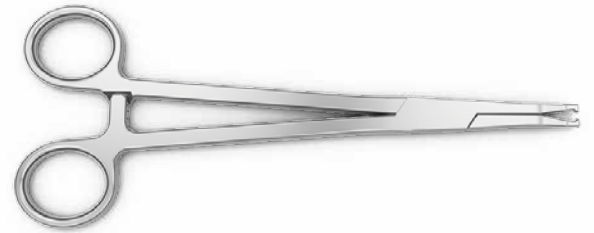
Impactor

CET30201



Removal forceps

CET60100



Cervical Instrument Tray

CEC00101

Cervical Tray Insert

CEC 00199



CEM00004 Rev. C

EIT Emerging Implant Technologies GmbH

Heubergweg 8, D-78532 Tuttlingen, Germany

T +49 (0) 7461 17169-00, F +49 (0) 7461 17169-09

info@eit-spine.de, www.eit-spine.de

